

(KEY)

YOU ARE TOO BEAUTIFUL

- RODGERS/HART

D-7 G7 E-7 A7 alt. D-7 G7 alt. Cmaj7 - E-7 Eb7



D-7 - F-7 Bb7 A-7 D7 | 1. D-7 G7 E-7 A7 B7



2. D7 - D-7 G7 C6 Fmaj7 F#0 C/G A7



D-7 G7 Cmaj7 B-7 b5 E7 A7 A- A-(maj)



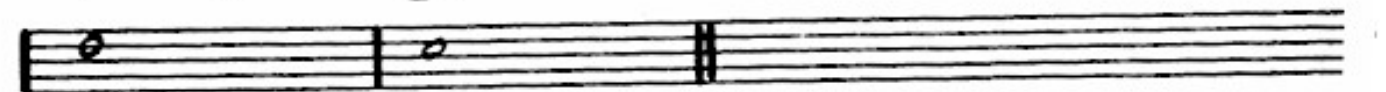
A-7 D7 D-7 G7 D-7 G7 E-7 A7 alt.



D-7 G7 alt. Cmaj7 D-7 - F-7 Bb7 A-7 D7



D-7 G7 C6



FWS

